

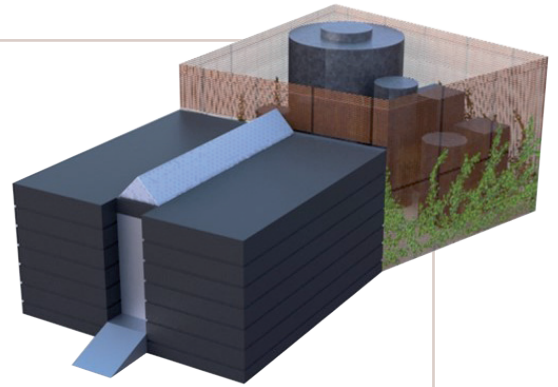
# MEDIX<sup>®</sup>

An innovative, compact and modular concept for treating micropollutants



# Elimination of pharmaceutical residues in effluents

The environmentally friendly **Medix®** technology is exclusively based on a unique combination of biological & mechanical treatment steps to eliminate harmful micropollutants without the use of chemical disinfectants.



## Key advantages



High performance



Biological process



Low energy consumption



Modularity



Easy integration

## Modular design

MEDIX®  
H100  
From 20 to  
100 beds

MEDIX®  
H250  
From 100 to  
250 beds

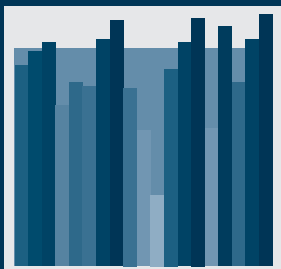
MEDIX®  
H400  
From 250 to  
400 beds

**+ Tailor-made design**  
for specific applications

## An exceptional abatement rate:

Pharmaceutical micropollutants abatement rate between the inlet and the outlet of 90%

Micropollutants at inlet



**-90%**  
at outlet



## Added value for clients:



Effective wastewater treatment:  
elimination of macro- and micropollutants



Increased social responsibility



Reduced ecological footprint

## Operating principle:

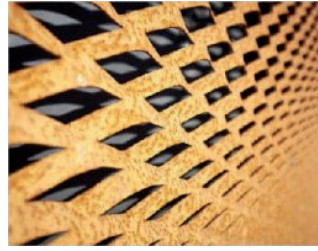
Medix® exploits the enzymatic capacities of microorganisms; By promoting their growth and their activity under certain conditions, we manage to biologically digest a large panel of pharmaceutical residues.

## Architectural integration & modularity

Medix® is a solution suitable for all volumes and composition of effluents.

With a view to optimal integration, we have developed different architectural finishes in order to better integrate the plant.

Medix® can be installed both indoors and outdoors.



Example of architectural finish available for outdoor installation



## Turnkey solutions

From design to operation, we deliver turnkey solution including:



Study & Characterization of needs



Turnkey installation



Start-up and adjustment



Monitoring and operation

## John Cockerill's service offer

John Cockerill can also monitor your installation after the start-up, with a maintenance contract, including:

- Preventive and curative maintenance
- Performance analysis and monitoring
- Optimization of operating parameters
- Follow-up report



## John Cockerill Water

[environment.water@johncockerill.com](mailto:environment.water@johncockerill.com)

**Belgique** : [balteau@johncockerill.com](mailto:balteau@johncockerill.com)  
Tél. : +32 (0)4 253 22 24

**France** : [proserpol@johncockerill.com](mailto:proserpol@johncockerill.com)  
Tél. : +33 (0)1 30 45 90 20

## John Cockerill Environment

Rue Jean Potier, 1 ■ 4100 Seraing, Belgium  
Tél. : +32 (0)4 330 21 91

## John Cockerill's solutions cater to the ecological transition and circular economy

Firmly anchored in our experience, our solid technological know-how and our bold innovation in the treatment of water, air and waste, our **Water Business Line** offers highly performant and modular solutions for the efficient treatment of industrial and municipal wastewater, the production of process water and REUSE, as well as optimized renewable methane production.



Follow us on  
**LinkedIn**



[johncockerill.com/environment](https://johncockerill.com/environment)

